



LEGEND

- PROJECT BOUNDARY
- COURTYARD PAVER
- SHRUBS AND GROUNDCOVERS
- PROPOSED TREES
- CONCRETE PATH
- PRECAST CONCRETE UNITS
- LAWN

NOTES

1. Shared bicycle and pedestrian link path.
2. Provide access to share way link from private courtyards.
3. Plant low maintenance ground cover, buffer screen and canopy tree species to western boundary..
4. Provide utility such as bicycle parking and equal access rest seating bays.
5. All private courtyards to have at least one area not less than 3000 x 3000mm.
6. Parking Bays
7. Streetside planting and avenue trees.
8. Pedestrian crossing. Roadway paved to reflect materials from plaza paving.
9. Casual seating and access to eastern pedestrian connection.
10. Include stepdown rear courtyards with access to pedestrian link.
11. Refer project Hydraulic Engineers drawings for all detailed starmwater information.

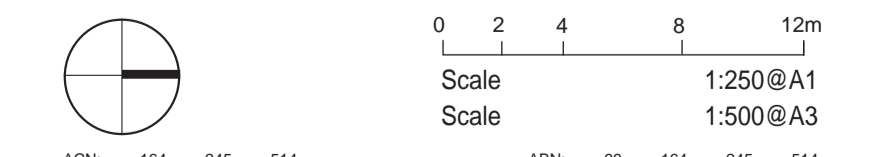
Sturt Noble Associates
 Suite 91, L5, 330 Wattle St
 Ultimo NSW 2007
 T. 02 9211 3744
 W. www.sturt-noble.com.au
 landscape architecture
 environmental & urban design

PROJECT
CONCORD AVENUE, CONCORD WEST

CLIENT
FTD Holdings Pty. Ltd.

DRAWING
LANDSCAPE MASTER PLAN

| | | | |
|-------------|-------|-------|------------|
| DRAWING No. | ISSUE | DRAWN | DATE |
| DA-1618-01 | A | hw | 09.08.2016 |



ACN: 164 245 514 ABN: 99 164 245 514
 THIS DRAWING SHOULD BE READ IN CONJUNCTION WITH ALL RELEVANT CONTRACTS, SPECIFICATIONS, REPORTS AND DRAWINGS. COPYRIGHT OF THIS DRAWINGS IS VESTED IN STURT NOBLE ASSOCIATES PTY LTD.



LEGEND



NOTES

1. Buffer planting to private courtyards. Mound soil at 1:4 from paving.
2. Paving colour banding laid in line with pre-fabricated concrete bars forming garden side walls and incidental seating.
3. Iconic feature tree in main raised lawn areas.
4. Lush low maintenance garden beds mound between bars up to raised lawn areas.
5. Pre-fabricated concrete bars (300 x 300 x 3600mm) and discs (300 x 300mm, 600mm and 1200mm diameters) form path flush to lawn and sculptural raised seating areas.
6. Secondary incidental seating and meeting areas nestled into lush layered garden and stand of deciduous canopy trees.
7. Mound soil from flush to finished paving at 1:5 to 1000mm depth at tree planting zone. Add palisade fence to edge car park ramp opening.
8. Sculptural structure (steel and timber) arranged over car park ramp opening to take large flowering climbing vine such as *Pandorea jasminoides*. As viewed from above and road and car park ramp.

DETAIL PLAN 01 - CENTRAL COURTYARD

INDICATIVE MATERIALS AND PLANTING IMAGES



PROJECT
CONCORD AVENUE, CONCORD WEST

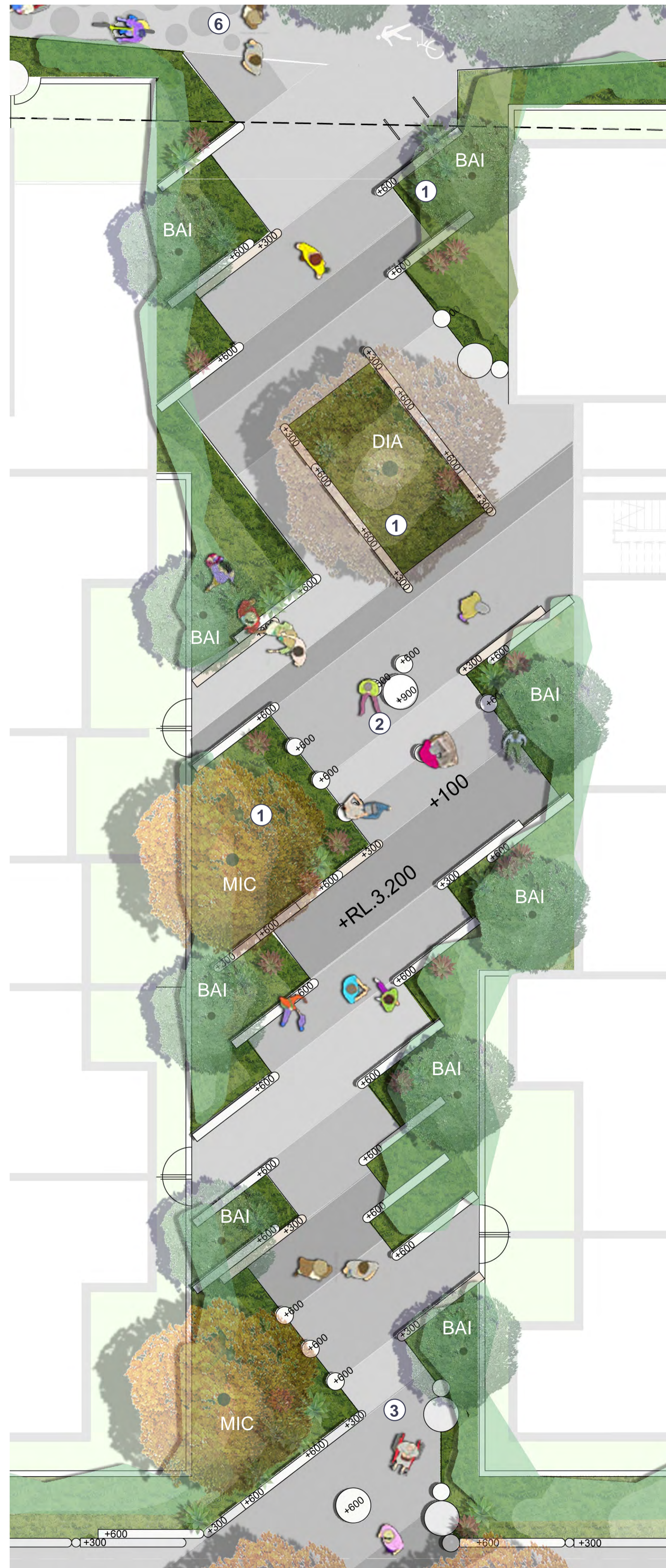
CLIENT
FTD Holdings Pty. Ltd.

DRAWING
DETAIL PLAN 01

DRAWING No. ISSUE DRAWN DATE
DA-1618-02 A hw 09.08.2016



ACN: 164 245 514 ABN: 99 164 245 514
THIS DRAWING SHOULD BE READ IN CONJUNCTION WITH ALL RELEVANT CONTRACTS, SPECIFICATIONS, REPORTS AND DRAWINGS. COPYRIGHT OF THIS DRAWING IS VESTED IN STURT NOBLE ASSOCIATES PTY LTD.



DETAIL PLAN 02 - LINK ROAD


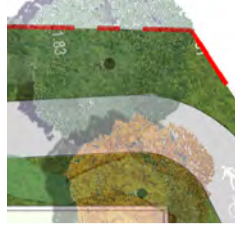








DETAIL PLAN 03 - POCKET PARK



Alpinia zerumbet 'Varigata'

LEGEND

-  PROJECT BOUNDARY
-  PROPOSED TREES
-  PRECAST CONCRETE UNITS
-  COURTYARD PAVER
-  3 TONES PAVING (Ecotrihex)
-  CONCRETE PATH
-  SHRUBS AND GROUNDCOVERS
-  LAWN

NOTES

1. Planting soil mounded from paving between prefabricated concrete sidewalks. Mound to 1000mm depth for trees and 600mm for general planting.
2. Double stack pre fabricated concrete discs to form sculptural casual seating areas.
3. Lush low maintenance planting set out to define visually interesting indirect route.
4. Feature trees, and sun lawn to northern aspect.
5. Lawn grades up from deep soil areas to sculptural casual seating edge over slab.
6. Shared bicycle and pedestrian link path.

Sturt Noble Associates
 Suite 91, L5, 330 Wattle St
 Ultimo NSW 2007
 T. 02 9211 3744
 W. www.sturnoble.com.au
 landscape architecture
 environmental & urban design

PROJECT
CONCORD AVENUE, CONCORD WEST

CLIENT
FTD Holdings Pty. Ltd.

DRAWING
DETAIL PLAN 02 & 03

| DRAWING No. | ISSUE | DRAWN | DATE |
|-------------|-------|-------|------------|
| DA-1618-03 | A | hw | 09.08.2016 |

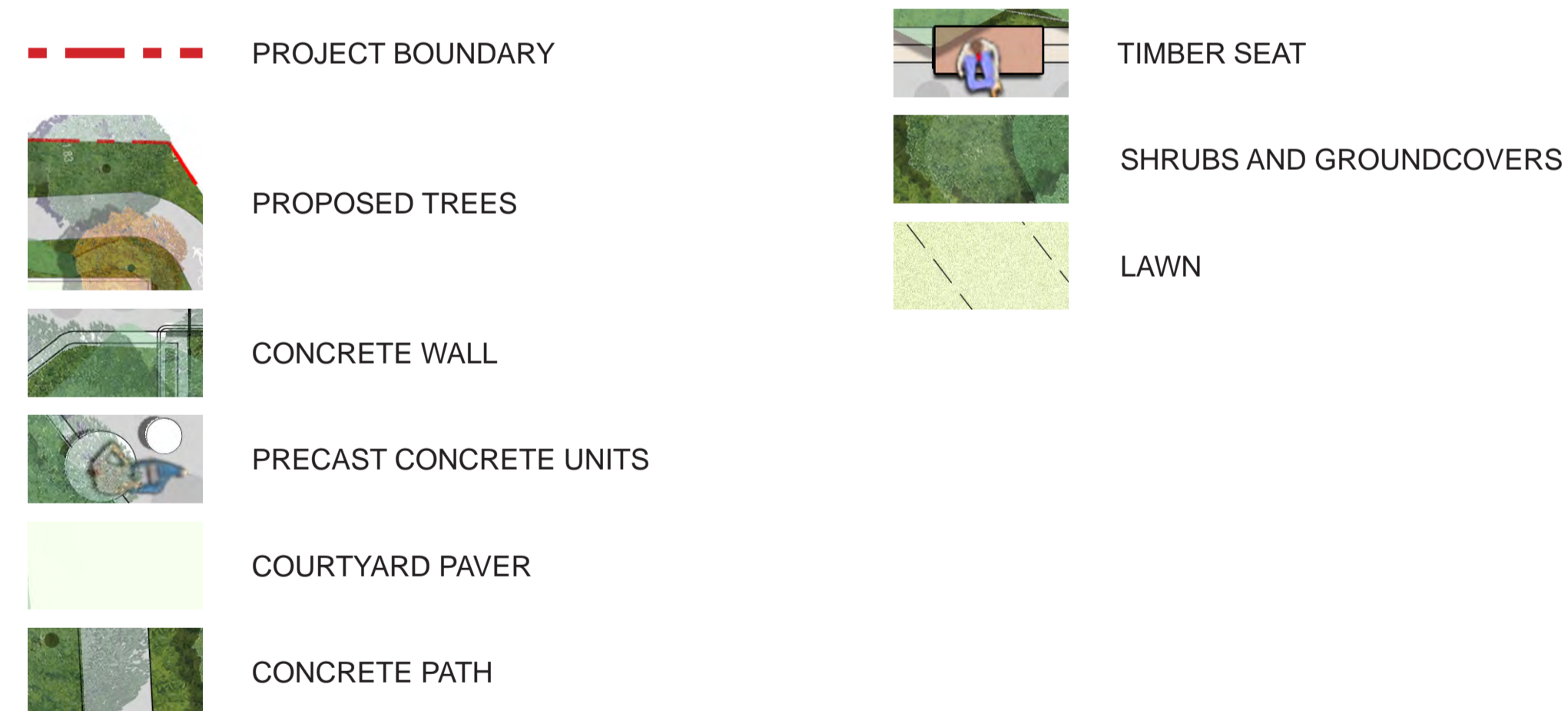
Scale: 1:100 @ A1, 1:200 @ A3

ACN: 164 245 514 ABN: 99 164 245 514
 THIS DRAWING SHOULD BE READ IN CONJUNCTION WITH ALL RELEVANT CONTRACTS, SPECIFICATIONS, REPORTS AND DRAWINGS. COPYRIGHT OF THIS DRAWINGS IS VESTED IN STURT NOBLE ASSOCIATES PTY LTD.



DETAIL PLAN 04 - SHARED CYCLEWAY

LEGEND



INDICATIVE PLANT IMAGES



DETAIL PLAN 05 - AREA ABOVE CULVERT ENTRY

NOTES

1. Shared bicycle and pedestrian link path.
2. Dense low maintenance planting set out to define visually interesting indirect route.
3. Provide utility such as bicycle parking and equal access rest seating bays.
4. Plant low maintenance ground cover, buffer screen and canopy tree species to western boundary.
5. Provide access to share way link from private courtyards
6. Pre-fabricated concrete bars (300 x 300 x 3600mm) and discs (300 x 300mm, 600mm and 1200mm diameters) form casual seating and visual interests
7. Flying stairway and small raised platform link eastern pedestrian path to central road over stormwater ingress area. Fill stormwater inlet vent with patterned breezeblock TBS.
8. Include stepdown rear courtyards with access to pedestrian link.
9. Pedestrian crossing, treeside planting and avenue trees.

NB: FOR DETAILED PLANT SELECTION FOR THESE AREAS REFER DA-1618-05

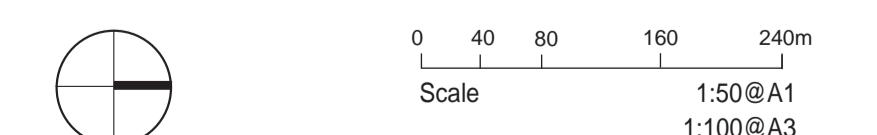


PROJECT
CONCORD AVENUE, CONCORD WEST

CLIENT
FTD Holdings Pty. Ltd.

DRAWING
DETAIL PLAN 04 & 05

DRAWING No. DA-1618-04 ISSUE A DRAWN hw DATE 09.08.2016



ACN: 164 245 514 ABN: 99 164 245 514
THIS DRAWING SHOULD BE READ IN CONJUNCTION WITH ALL RELEVANT CONTRACTS, SPECIFICATIONS, REPORTS AND DRAWINGS. COPYRIGHT OF THIS DRAWINGS IS VESTED IN STURT NOBLE ASSOCIATES PTY LTD.

PLANT SCHEDULE
COMMUNAL COURTYARDS AND THROUGH SITE LINK AREAS

| | BOTANICAL NAME | COMMON NAME | HxW (m) | POT SIZE | SPACING |
|-----|--|--------------------------------|-----------|----------|-----------|
| | Trees | | | | |
| ALE | <i>Alphitonia excelsa</i> | Red Ash | 10 x 5 | 100L | A.S. |
| BAB | <i>Bauhinia blakeana</i> | Hong Kong Orchid Tree | 5 x 4 | 100L | A.S. |
| BAI | <i>Banksia integrifolia</i> | Coast Banksia | 10 x 5 | 100L | A.S. |
| DIA | <i>Diploglottis australis</i> | Native Tamarind | 10 x 6 | 100L | A.S. |
| ELE | <i>Elaeocarpus eumundii</i> | Smooth-leaved Quandong | 10 x 5 | 100L | A.S. |
| LAI | <i>Lagerstroemia indica</i> | Crape myrtl | 10 x 6 | 100L | A.S. |
| LOC | <i>Lophostemon confertus</i> | Brush Box | 10 x 8 | 100L | A.S. |
| MIC | <i>Michelia champaca</i> | Michelia | 30 x 15 | 100L | A.S. |
| NYS | <i>Nyssa sylvatica</i> | Tupelo | 12 x 6 | 100L | A.S. |
| PIC | <i>Pistacia chinensis</i> | Chinese Pistache | 8 x 6 | 100L | A.S. |
| TRL | <i>Tristania laurina</i> | Water Gum | 7 x 4 | 100L | A.S. |
| WAF | <i>Waterhousia floribunda</i> | Weeping Lilly Pilly | 15 x 8 | 100L | A.S. |
| | Shrubs & Groundcovers | | | | |
| | <i>Adiantum aethiopicum</i> | Maidenhair Fern | 0.3 | 150mm | 300mm |
| | <i>Alpinia caerulea</i> 'Atherton' | Blueberry Ginger | 1.2 | 150mm | 300mm |
| | <i>Alpinia zerumbet</i> 'Varigata' | Shell Flower Ginger | 1.5 | 150mm | 600mm |
| | <i>Alcantarea imperialis</i> 'Rubra' | Giant Bromeliad | 1 | 5L | 700mm |
| | <i>Anemone japonica</i> | Japanese Wind Flower | 0.5 | 150mm | 300mm |
| | <i>Aphanopetalum resinosum</i> | Gum Vine | 0.75 | 150mm | 300mm |
| | <i>Asplenium australasicum</i> | Birds Nest Fern | 1 | 200mm | 500mm |
| | <i>Banksia robur</i> | Swamp Banksia | 2 - 3 | 150mm | Specimens |
| | <i>Blechnum</i> 'Silver Lady' | Silver Lady | 0.5 | 150mm | 400mm |
| | <i>Calathea zebrina</i> | Zebra Plant | 0.5 | 200mm | 400mm |
| | <i>Carex appressa</i> | Shortleaf Tall Sedge | 0.75 | 150mm | 300mm |
| | <i>Convolvulus</i> 'White Gladys' | Silver Bush | 0.5 | tube | 400mm |
| | <i>Cordyline petiolaris</i> | Broad Leaved Palm Lily | 1.5 | 200mm | 500mm |
| | <i>Crinum pedunculatum</i> | Swamp lily | 1 | 200mm | 500mm |
| | <i>Ctenanthe</i> spp. | Foliage Plant | 0.6 | 25L | 400mm |
| | <i>Cyathea cooperi</i> | Lacy Tree Fern | 3 - 5 | 25L | A.S. |
| | <i>Dianella</i> 'Silver Streak' | Silver Streak Flax Lily | 0.5 | 200mm | 400mm |
| | <i>Dichondra argentea</i> 'Silver Fall' | Silver Kidney Creep | 0.25 | 150mm | 150mm |
| | <i>Helmholtzia glaberrima</i> | Stream Lily | 1 | 200mm | 500mm |
| | <i>Hibbertia scandens</i> | Guinea Flower / Snake Vine | 0.5 | 200mm | 400mm |
| | <i>Hymenocallis speciosa</i> | Beach Spider Lily | 0.75 | 200mm | 400mm |
| | <i>Isolepis nodosa</i> | Knobby Club Rush | 0.8 | tube | 400mm |
| | <i>Juncus usitatus</i> | Juncus sp. | 0.8 | tube | 400mm |
| | <i>Kennedia prostrata</i> | Running Postman | 0.35 | 50mm | 300mm |
| | <i>Liriope muscari</i> 'Just Right' | Just Right Lily Turf | 0.5 | 150mm | 250mm |
| | <i>Lomandra</i> 'Nyalla' | Lomandra Nyalla | 1 | tube | 400mm |
| | <i>Lomandra hystrix</i> | Slender Mat Rush | 1 | 150mm | 400mm |
| | <i>Lomandra</i> 'Tanika' | Lomandra Tanika | 0.6 | 200mm | 400mm |
| | <i>Macrozamia communis</i> | Burrawang | 1 | 25L | A.S. |
| | <i>Metrosideros</i> 'Fiji Fire' | Metrosideros Fiji Fire | 1 | 25L | 400mm |
| | <i>Pennisetum alopecuroides</i> 'Purple Lea' | Swamp Foxtail Grass Purple Lea | 0.7 | 150mm | 500mm |
| | <i>Philodendron</i> 'Xanadu' | Xanadu | 0.7 | 200mm | 300mm |
| | <i>Phormium tenax</i> | New Zealand Flax | 1.5 | 25L | 400mm |
| | <i>Poa labillardieri</i> | Tussock Grass | 0.7 | 200mm | 600mm |
| | <i>Strelitzia juncea</i> | Leafless Bird of Paradise | 1.5 | 5L | 600mm |
| | <i>Syzygium</i> 'Tiny Trev' | Tiny Trev Lilly Pilly | 1.5 | 5L | 1m |
| | <i>Viburnum suspensum</i> | Sandankwa Viburnum | 2 - 3 | 45L | 1m |
| | <i>Viburnum</i> 'Emerald Lustre' | Emerald Lustre Viburnum | 4 x 4 | 45L | 1.2m |
| | <i>Viola hederacea</i> | Native Violet | 0.25 | tube | 200mm |
| | <i>Westringia fruticosa</i> | Coast Rosemary | 1.5 | 300mm | 600mm |
| | <i>Zieria</i> sp. | Carpet Star | 0.5 | 150mm | 300mm |
| | Climbers | | | | |
| | <i>Pandorea jasminoides</i> | Bower of Beauty | 1.8 x 0.6 | 200mm | A.S. |
| | <i>Pandorea pandorana</i> | Wonga Wonga Vine | 5 | 200mm | A.S. |

PLANT SCHEDULE
EASTERN AND WESTERN BOUNDARY PUBLIC ACCESS AND SITE LINK

| | BOTANICAL NAME | COMMON NAME | HxW (m) | POT SIZE | SPACING |
|-----|--|--------------------------------|-----------|----------|-----------|
| | Trees | | | | |
| ACS | <i>Acmena Smithii</i> | Lilly Pilly | 10 x 5 | 100L | A.S. |
| BAI | <i>Banksia integrifolia</i> | Coast Banksia | 10 x 5 | 100L | A.S. |
| DIA | <i>Diploglottis australis</i> | Native Tamarind | 10 x 6 | 100L | A.S. |
| ELE | <i>Elaeocarpus eumundii</i> | Smooth-leaved Quandong | 10 x 5 | 100L | A.S. |
| EUB | <i>Eucalyptus botryoides</i> | Southern Mahogany | 40 x 30 | 100L | A.S. |
| EUL | <i>Eucalyptus leucoxylon</i> | Yellow Gum | 10 x 7 | 100L | A.S. |
| MEA | <i>Melaleuca armillaris</i> | Bracket Honey Myrtle | 8 x 7 | 100L | A.S. |
| TRL | <i>Tristania laurina</i> | Water Gum | 7 x 4 | 100L | A.S. |
| | Shrubs & Groundcovers | | | | |
| | <i>Adiantum aethiopicum</i> | Maidenhair Fern | 0.3 | 150mm | 300mm |
| | <i>Alpinia caerulea</i> 'Atherton' | Blueberry Ginger | 1.2 | 150mm | 300mm |
| | <i>Aphanopetalum resinosum</i> | Gum Vine | 0.75 | 150mm | 300mm |
| | <i>Asplenium australasicum</i> | Birds Nest Fern | 1 | 200mm | 500mm |
| | <i>Banksia robur</i> | Swamp Banksia | 2 - 3 | 150mm | Specimens |
| | <i>Blechnum</i> 'Silver Lady' | Silver Lady | 0.5 | 150mm | 400mm |
| | <i>Carex appressa</i> | Shortleaf Tall Sedge | 0.75 | 150mm | 300mm |
| | <i>Cordyline petiolaris</i> | Broad Leaved Palm Lily | 1.5 | 200mm | 500mm |
| | <i>Crinum pedunculatum</i> | Swamp lily | 1 | 200mm | 500mm |
| | <i>Cyathea cooperi</i> | Lacy Tree Fern | 3 - 5 | 25L | A.S. |
| | <i>Dianella</i> 'Silver Streak' | Silver Streak Flax Lily | 0.5 | 200mm | 400mm |
| | <i>Dichondra argentea</i> 'Silver Fall' | Silver Kidney Creep | 0.25 | 150mm | 150mm |
| | <i>Helmholtzia glaberrima</i> | Stream Lily | 1 | 200mm | 500mm |
| | <i>Hibbertia scandens</i> | Guinea Flower / Snake Vine | 0.5 | 200mm | 400mm |
| | <i>Hymenocallis speciosa</i> | Beach Spider Lily | 0.75 | 200mm | 400mm |
| | <i>Isolepis nodosa</i> | Knobby Club Rush | 0.8 | tube | 400mm |
| | <i>Juncus usitatus</i> | Juncus sp. | 0.8 | tube | 400mm |
| | <i>Kennedia prostrata</i> | Running Postman | 0.35 | 50mm | 300mm |
| | <i>Lomandra</i> 'Nyalla' | Lomandra Nyalla | 1 | tube | 400mm |
| | <i>Lomandra hystrix</i> | Slender Mat Rush | 1 | 150mm | 400mm |
| | <i>Lomandra</i> 'Tanika' | Lomandra Tanika | 0.6 | 200mm | 400mm |
| | <i>Pennisetum alopecuroides</i> 'Purple Lea' | Swamp Foxtail Grass Purple Lea | 0.7 | 150mm | 500mm |
| | <i>Poa labillardieri</i> | Tussock Grass | 0.7 | 200mm | 600mm |
| | <i>Viola hederacea</i> | Native Violet | 0.25 | tube | 200mm |
| | <i>Westringia fruticosa</i> | Coast Rosemary | 1.5 | 300mm | 600mm |
| | Climbers | | | | |
| | <i>Pandorea jasminoides</i> | Bower of Beauty | 1.8 x 0.6 | 200mm | A.S. |
| | <i>Pandorea pandorana</i> | Wonga Wonga Vine | 5 | 200mm | A.S. |



Nyssa sylvatica



Diploglottis australis

Sturt Noble
Associates
Suite 91, L5, 330 Wattle St
Ultimo NSW 2007
T. 02 9211 3744
W. www.sturnoble.com.au
landscape architecture
environmental & urban design

PROJECT
CONCORD AVENUE, CONCORD WEST

CLIENT
FTD Holdings Pty. Ltd.

DRAWING
PLANT SCHEDULE

DRAWING NO. ISSUE DRAWN DATE
DA-1618-05 A hw 09.08.2016

0 40 80 160 240m
Scale 1:50@A1
1:100@A3

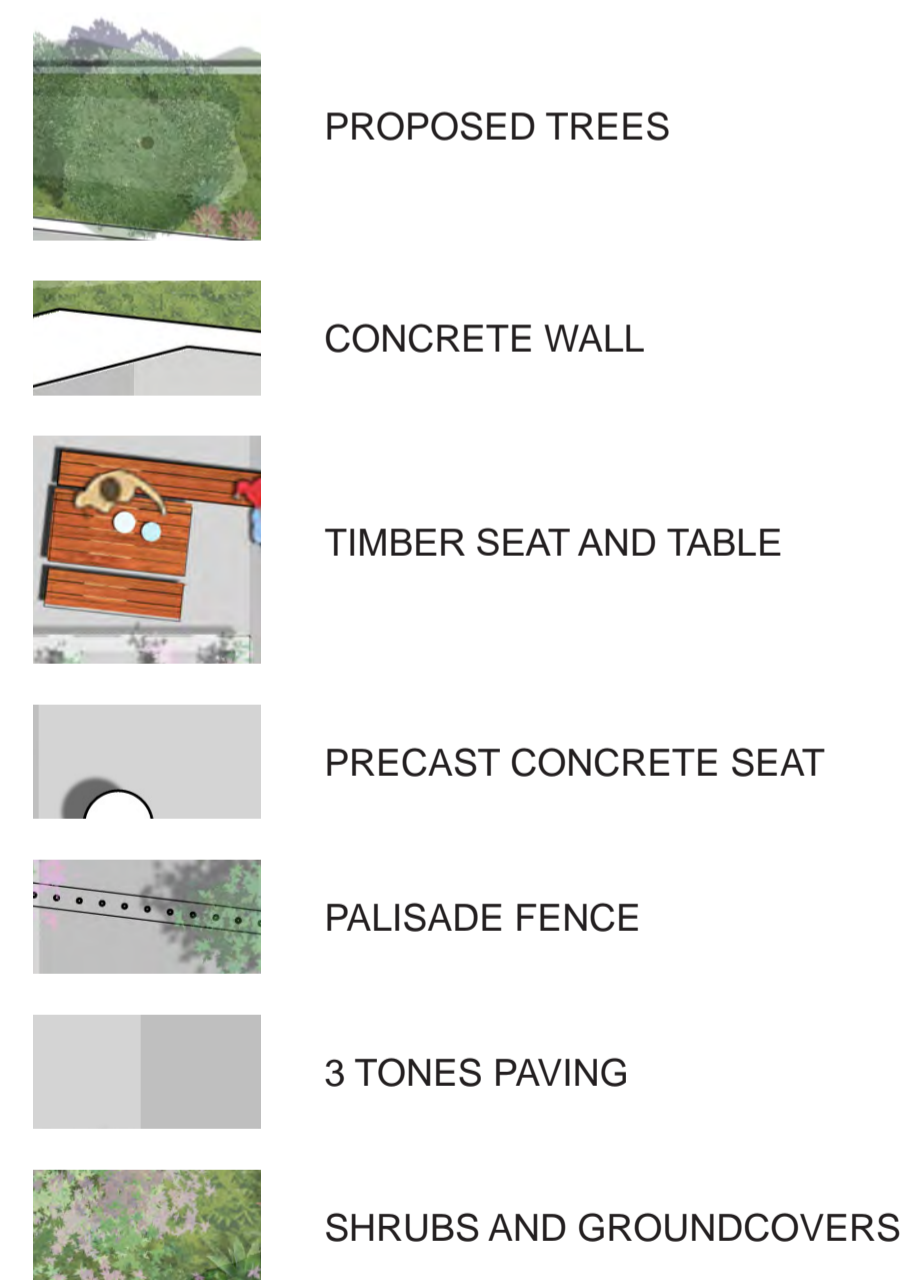
ACN: 164 245 514 ABN: 99 164 245 514
THIS DRAWING SHOULD BE READ IN CONJUNCTION WITH ALL RELEVANT CONTRACTS, SPECIFICATIONS, REPORTS AND DRAWINGS. COPYRIGHT OF THIS DRAWINGS IS VESTED IN STURT NOBLE ASSOCIATES PTY LTD.



PLANT SCHEDULE COMMUNAL ROOF BBQ TERRACE

| BOTANICAL NAME | COMMON NAME | HxW (m) | POT SIZE | SPACING |
|--|----------------------------|-----------|----------|---------|
| Trees | | | | |
| BAI <i>Banksia integrifolia</i> | Coast Banksia | 10 x 5 | 75L | A.S. |
| Shrubs and Groundcovers | | | | |
| <i>Alcantarea imperialis</i> | Imperial Bromeliad | 2.5 x 2 | 25L | 1m |
| <i>Banksia paludosa</i> | Marsh | 1.5 x 1.5 | 300mm | 1m |
| <i>Banksia robur</i> | Swamp Banksia | 2 - 3 | 25L | 1.5m |
| <i>Beschorneria yuccoides</i> | Mexican Lily | 1 x 1 | 25L | 600mm |
| <i>Blechnum 'Silver Lady'</i> | Silver Lady Blechnum | 1.2 x 1 | 200mm | 600mm |
| <i>Carpobrotus glaucescens</i> | Pig Face | 0.1 x 1 | 200mm | 300mm |
| <i>Crinum pedunculatum</i> | Swamp lily | 1.5 x 1.5 | 200mm | 400mm |
| <i>Dianella 'Breeze'</i> | Breeze Dianella | 0.6 x 0.6 | 150mm | 300mm |
| <i>Dichondra argentea 'Silver Fall'</i> | Silver Kidney Creep | 0.2 x 1 | 200mm | 300mm |
| <i>Furcraea gigantea 'Variegata'</i> | Variegated Soft Leaf Agave | 3 x 3 | 200mm | 1m |
| <i>Lomandra 'Katrinus'</i> | Lomandra Katrinus | 0.7 x 0.7 | 200mm | 400mm |
| <i>Lomandra 'Tanika'</i> | Lomandra Tanika | 0.6 x 0.6 | 200mm | 400mm |
| <i>Loropetalum chinensis</i> | Fringe Flower | 2 x 2 | 300mm | 1m |
| <i>Nandina domestica</i> | Nandina | 1.5 x 1.5 | 200mm | 800mm |
| <i>Pennisetum alopecuroides</i> | Swamp Foxtail | 0.8 x 0.5 | 200mm | 400mm |
| <i>Poa labillardieri</i> | Tussock Grass | 0.8 x 0.5 | 200mm | 400mm |
| <i>Rhaphiolepis indica 'Springtime'</i> | Indian Hawthorn | 1.5 x 2 | 300mm | 1m |
| <i>Viburnum odoratissimum 'Emerald Lustre'</i> | Emerald Lustre Viburnum | 4 x 4 | 25L | 1m |
| <i>Westringia 'Naringaa'</i> | Coastal Rosemary | 2.2 x 1.5 | 300mm | 800mm |
| Climbers | | | | |
| <i>Akebia quinata</i> | Chocolate Vine | 3 | 200mm | A.S. |
| <i>Pandorea jasminoides</i> | Bower of Beauty | 1.8 x 0.6 | 200mm | A.S. |
| <i>Pandorea pandorana</i> | Wonga Wonga Vine | 5 | 200mm | A.S. |

LEGEND



Furcraea gigantea 'Variegata'

NOTES

- Generous garden beds with layered planting. 1200mm soil depth.
- Flowering climbing vines to palisade fence from raised planter bed. Palisade frames view from sheltered long bench to gardens below.
- Thickened wall as standing bar/ utility area.
- Maintenance only access to Sedum sp. Planting in hob edge.
- Small group picnic tables to sheltered areas. Flowering vine on shelter from adjoining raised planter.
- Electric BBQ and food preparation area over unit paving.
- Grow flowering climbing vines to end face wall.
- Maintenance only access to Sedum sp. Planting in hob edge.

INDICATIVE PLANT IMAGES



Banksia integrifolia *Banksia paludosa* *Blechnum 'Silver Lady'* *Beschorneria yuccoides* *Nandina domestica* *Rhaphiolepis indica* *Crinum pedunculatum* *Dianella 'Breeze'* *Carpobrotus glaucescens* *Pennisetum alopecuroides* *Pandorea pandorana*



PROJECT
CONCORD AVENUE, CONCORD WEST

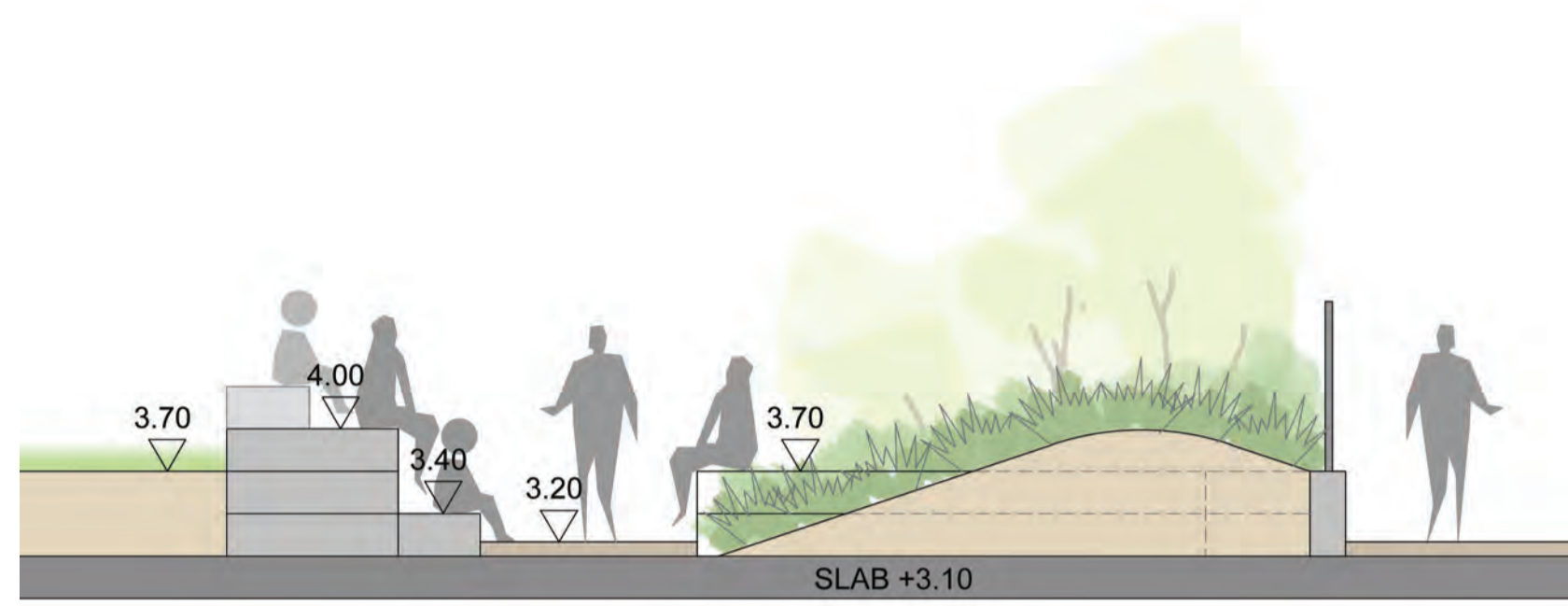
CLIENT
FTD Holdings Pty. Ltd.

DRAWING
ROOF PLAN

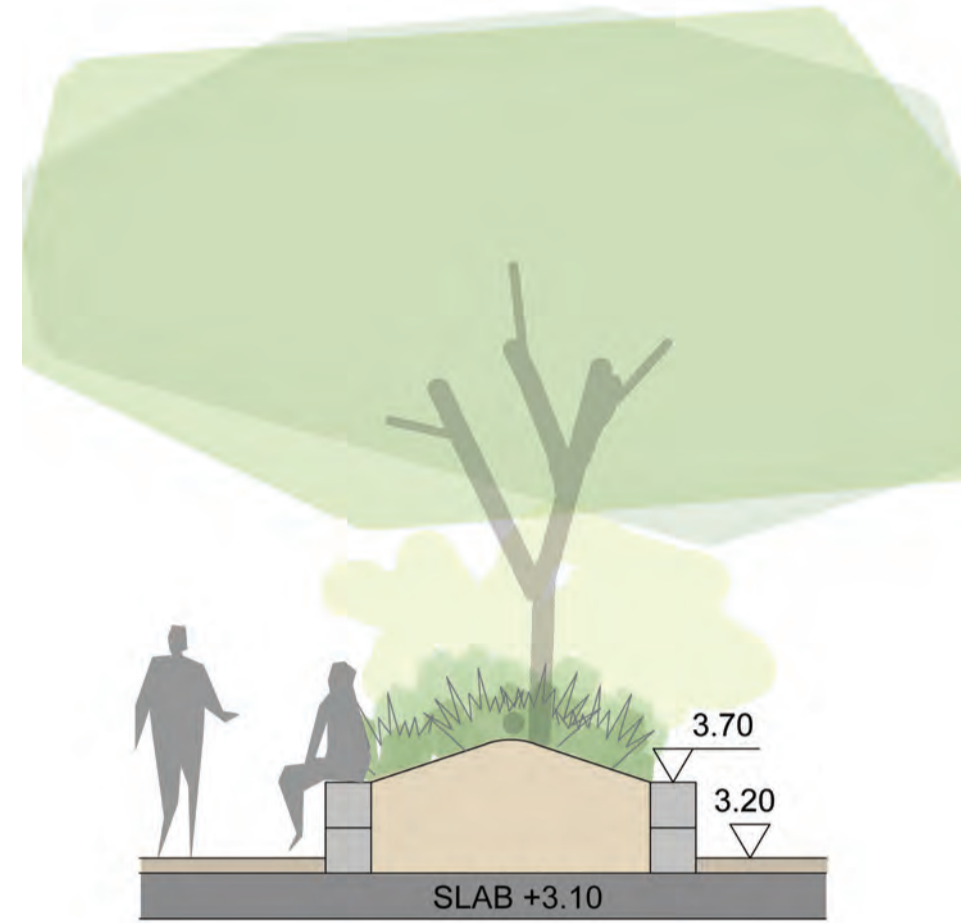
DRAWING No. ISSUE DRAWN DATE
DA-1618-06 A hw 09.08.2016

Scale 1:50@A1
1:100@A3

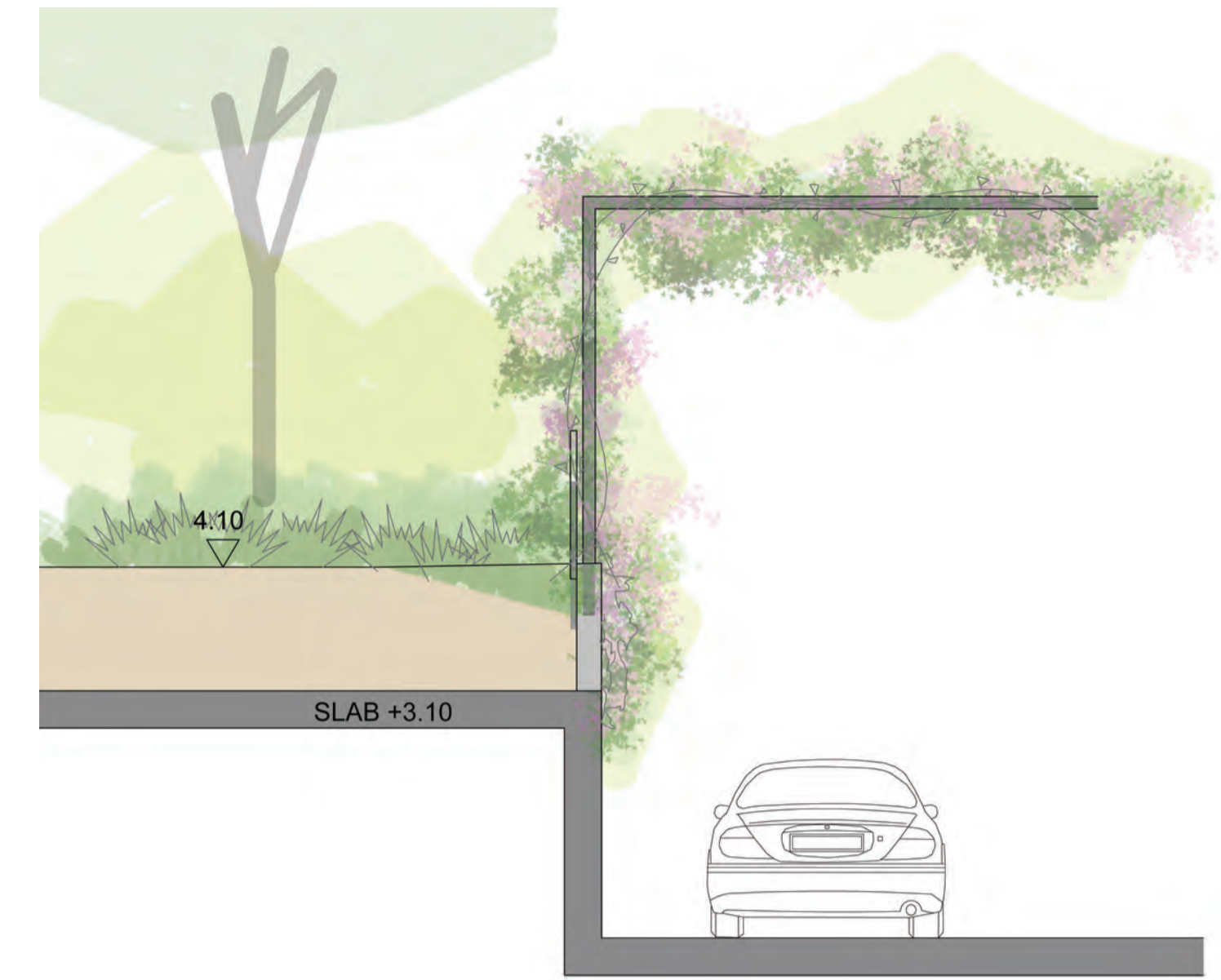
ACN: 164 245 514 ABN: 99 164 245 514
THIS DRAWING SHOULD BE READ IN CONJUNCTION WITH ALL RELEVANT CONTRACTS, SPECIFICATIONS, REPORTS AND DRAWINGS. COPYRIGHT OF THIS DRAWING IS VESTED IN STURT NOBLE ASSOCIATES PTY LTD.



SECTION A-A

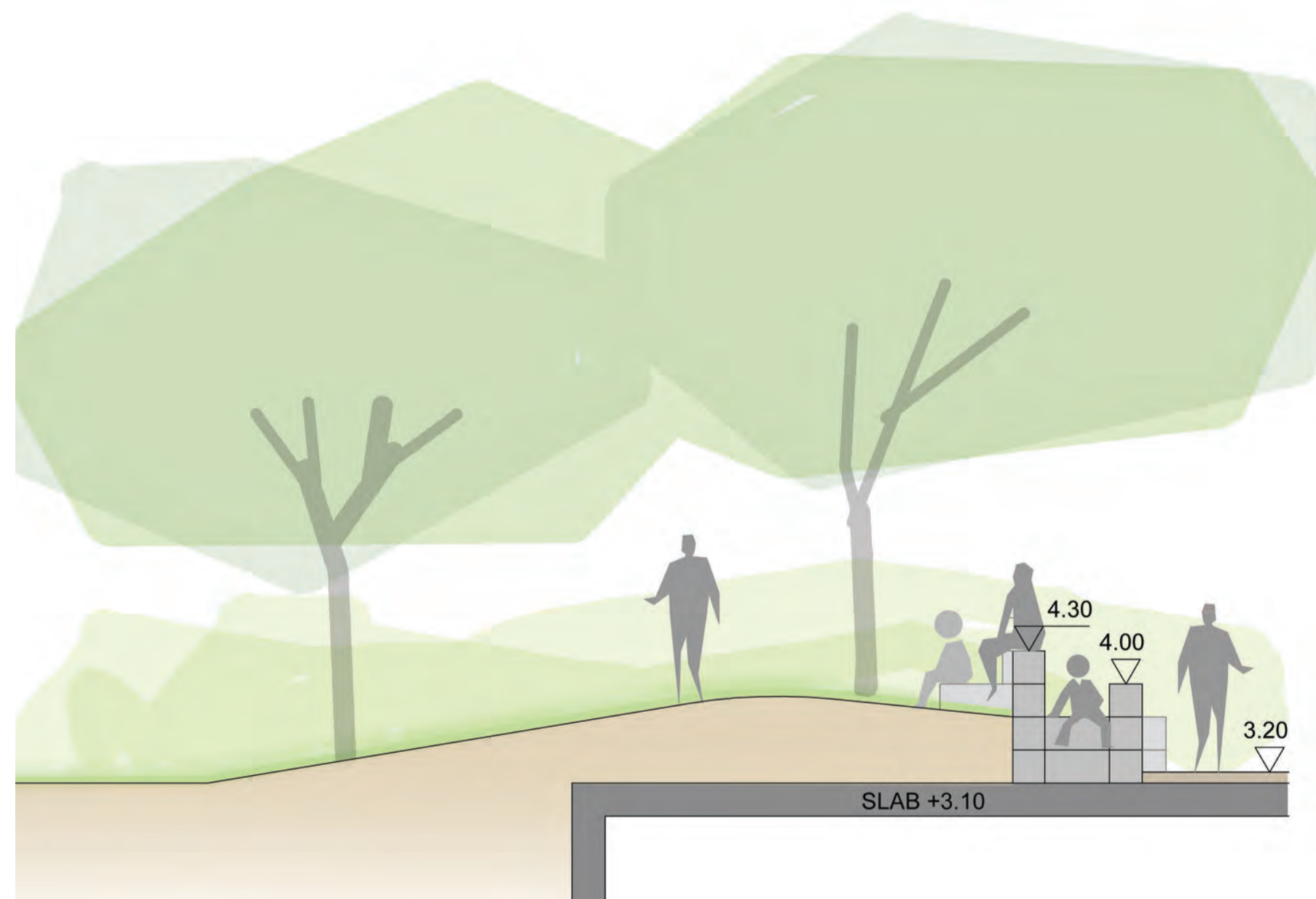


SECTION B-B

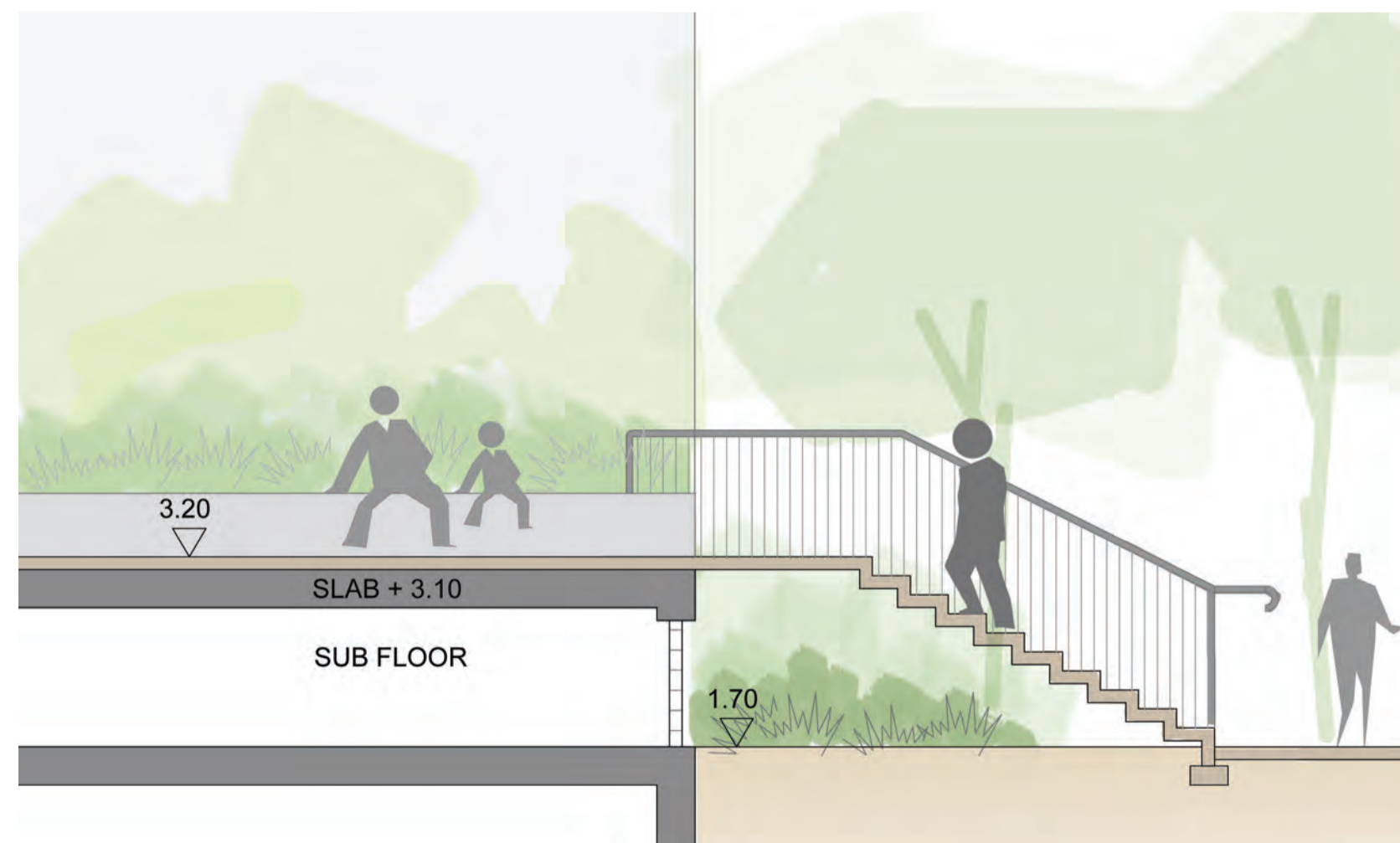


SECTION C-C

NB:
REFER DA-1618-01 FOR
SECTION MARKS



SECTION D-D



SECTION E-E

Sturt Noble
Associates
PROJECT
CONCORD AVENUE, CONCORD WEST
CLIENT
FTD Holdings Pty. Ltd.
DRAWING
SECTIONS

PROJECT
CONCORD AVENUE, CONCORD WEST

CLIENT
FTD Holdings Pty. Ltd.

DRAWING
SECTIONS

DRAWING No. DA-1429-07 ISSUE A DRAWN hw DATE 09.08.2016

0 40 80 160 240m
Scale 1:50@A1
1:100@A3

ACN: 164 245 514 ABN: 99 164 245 514
THIS DRAWING SHOULD BE READ IN CONJUNCTION WITH ALL RELEVANT CONTRACTS,
SPECIFICATIONS, REPORTS AND DRAWINGS. COPYRIGHT OF THIS DRAWINGS IS VESTED IN
STURT NOBLE ASSOCIATES PTY LTD.